



Can you solve the Murder Mystery?



Oh no! This quarantine has finally gotten to the town staff! They are tired of all the cancellations and delays in their fun activities. They wish people could be back in the parks, having fun, making crafts, working out, playing ball, and tennis. Enough is enough!

Are you a good enough detective to figure out which employee finally snapped? Who did it? Where did they do it? What weapon did they use? Clues will be hidden along on the town trails. Be sure to maintain appropriate social distancing while you investigate and please don't touch or remove the clue!

Search high and low for paper clues along the trails that will mention either a suspect, weapon or location that wasn't used in the crime (you don't actually need to visit those parks). You will need to walk, bike or run on each path to make sure you don't miss any evidence.

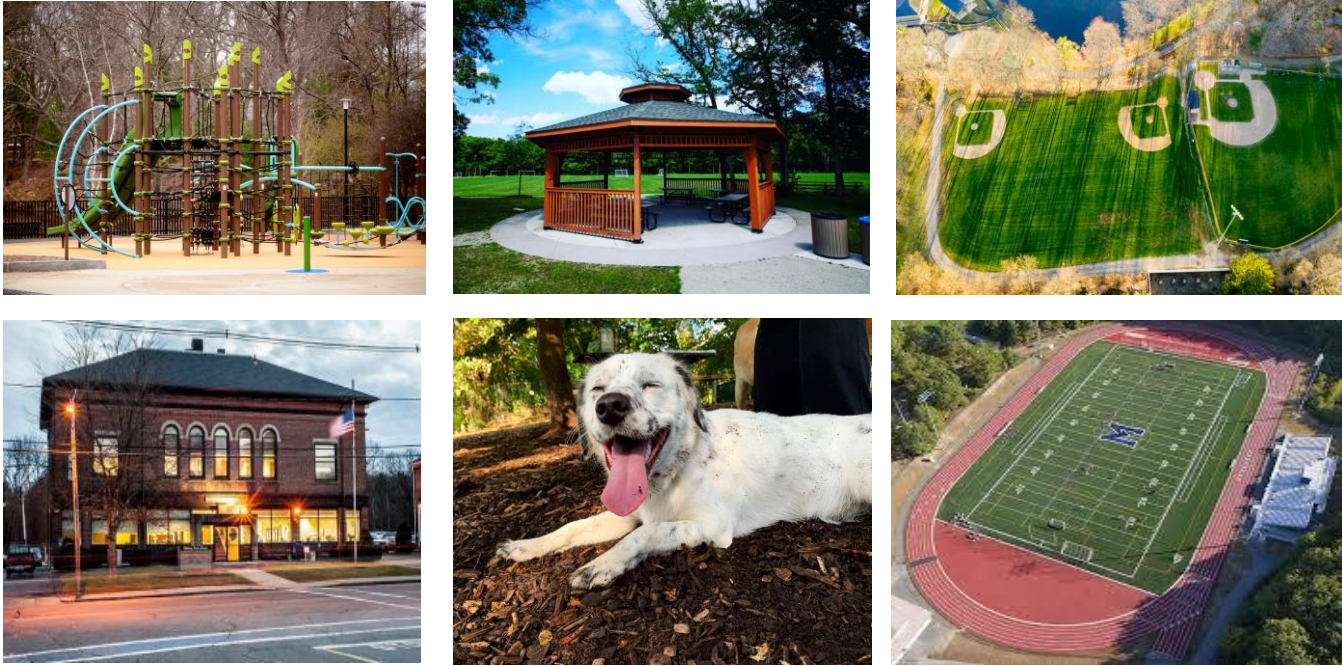
Once you have figured out this mystery be sure to visit the Medway Parks and Recreation Facebook page and post that you solved the crime, and how many detectives are in your family. One lucky family will be drawn to win an ice cream treat! DON'T give away the answer online, we want to keep this fun going and give everyone a chance to figure it out.

The game will go from May 15-31. Use the following page to check off the clues you find.

List of Weapons: Golf Cart, Weed Kill Poison, Baseball Bat, Hammer, Lawn Mower, Toaster



List of Locations: Choate Park, Oakland Park, Cassidy Fields, Town Hall, Medway's Dog Park, Hanlon Field



List of Suspects: Parks and Recreation Director, Julie Harrington; Director of Council on Aging, Courtney Riley; Town Clerk & Board of Selectmen, Mary Jane White; Town Manager, Michael Boynton; Deputy Director of DPW, Pete Pelletier; Human Resources Coordinator, Katherine Bird.

